



THE KENNETH A. PICERNE FOUNDATION

Global Sustainability Project



We are on our way....
Los Angeles to London to
Johannesburg in about 28
hours





Home sweet home!

GSP Group Arrives at Mankwe Game Reserve in South Africa





Student Cottage,
Bungalow & Safari Tent



Safari Tent & Donkey Boiler



Week 1 Schedule – South Africa Research Expedition

Day	Wed	Thurs	Fri	Sat	Sun
AM	07:10 Land in Johannesburg & Drive to Mankwe 13:00 Arrive at Mankwe	07:30 Breakfast 08:00 Bush walk and bird survey 09:30 About the project	07:30 Breakfast 08:00 Large Mammal walked transects 09:00 Calculate data collected	08:00 Breakfast 08:30 Conservation Management lecture, involving sustainability - presented by the chief warden	07:30 Breakfast 08:00 Selly Park High school
PM	13:30 Lunch 14:00 Safety Talk 16:00 Game drive	13:00 Lunch 14:00 Group time 15:00 Camera equipment training 15:30 Set up camera traps at Mankwe	12:00 Lunch 13:00 Depart for Pilanesberg National Park 14:30 Latrine surveys in Pilanesberg	12:00 Lunch 13:00 Group Time 15:00 Grass surveys and biodiversity exercise	13:00 Lunch at Bakabung Lodge 15:00 Tourist drive in PBG
Night	19:00 Dinner 19:30 Get to know you session	18:30 Dinner 19:00 Spotlight Transects x 7 MWR	18:30 Picnic Dinner in hide 19:00 Spotlight transects in PBG	18:30 Dinner 19:00 Spotlight Transects x7 Mankwe	19:00 Dinner Night Off and self-reflection

Week 2 Schedule – South Africa Research Expedition

Day	Mon	Tue	Wed	Thurs	Fri
AM	08:00 Breakfast 09:00 Re-bait cameras 10:30 Data Collation and photo analysis	07:00 Breakfast 07:30 Burn management	07:00 Breakfast 08:00 Bush walk, bush skills and tracking 11:00 Group exercise	08:00 Breakfast 08:30 Foot Patrol to Monitor Large Mammals 11:00 Complete Data entry and photo analysis	07:30 Breakfast 08:00 Settle Accounts 09:00 Depart for Johannesburg 11:30 Arrive at the Apartheid Museum
PM	13:00 Lunch 13:30 Depart for Pilanesberg National Park 14:00 Latrine Transects	12:00 Lunch 13:00 Group time 14:00 Visit to local market 16:00 Prepare evening meal with produce from the market	13:00 Lunch 13:30 Depart for Pilanesberg National Park 14:00 latrine surveys	13:00 Lunch 14:00 Sustainability Discussion 16:00 Depart for Sundowner Koppie/last game drive	13:00 Lunch 16:00 Arrive ORT airport
NIGHT	18:00 Picnic Dinner in hide 18:30 Spotlight transects x 6 PBG	18:30 Dinner 19:30 Night around camp fire, astronomy talk	18:30 Picnic Dinner 19 :30 Spotlight Transects PBG	19:00 Dinner 20:00 Summary and reflection	

Long Days – and Cold Nights...



Training begins....



GPS, rangefinders, binoculars...



Organizing evening animal transect kits.....



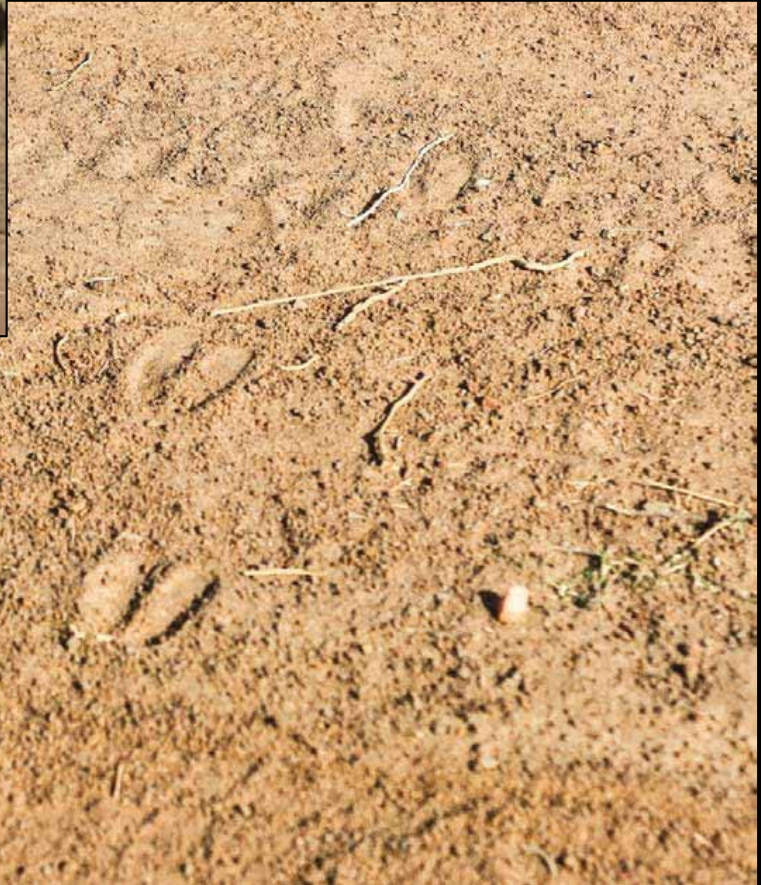
Spotlight Transects

HCO ScoutGuard

8.20.2012 2:41:03

Camera Trapping



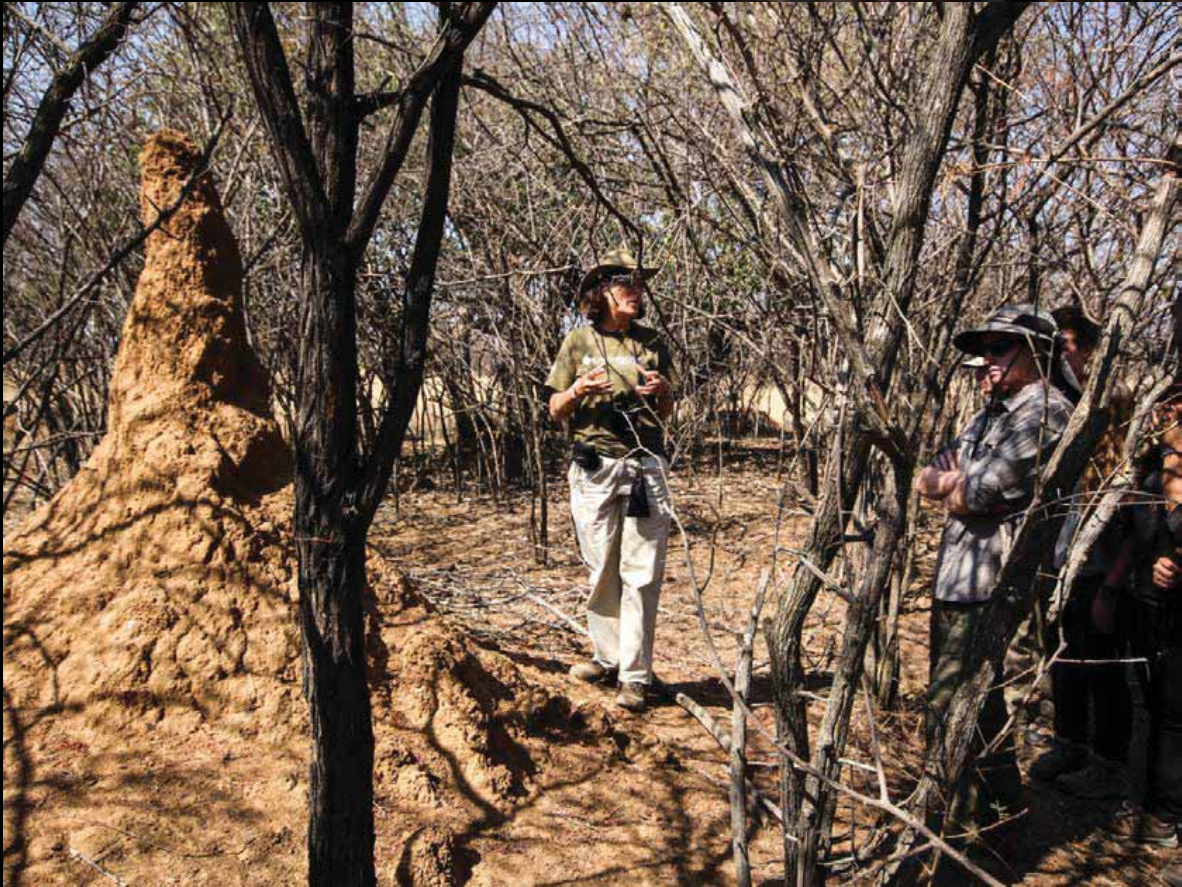


Tracking and
bush skills



Plant Identification and Local Uses

Insect Identification



Bush Treks







Local History & Culture

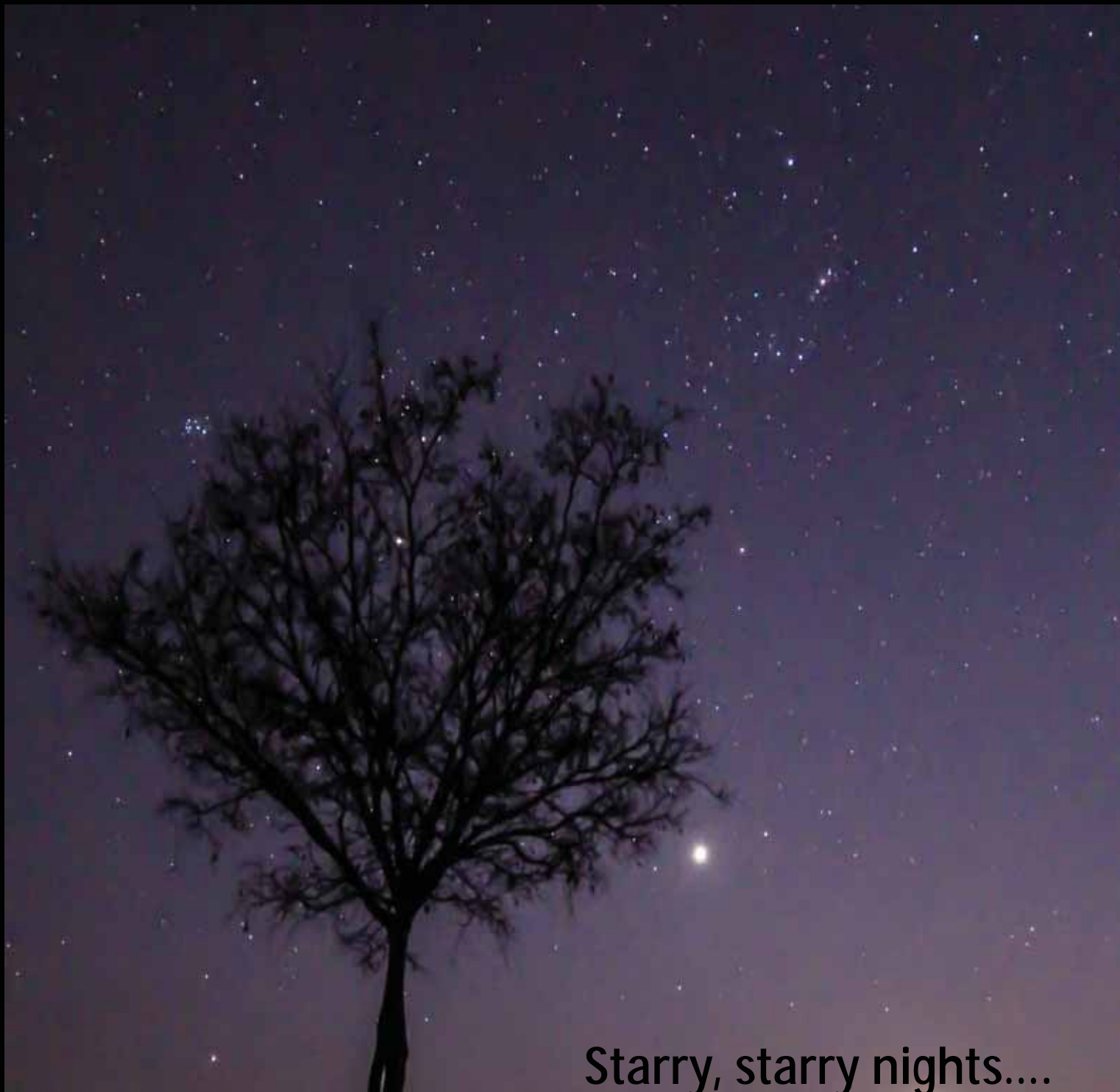
Eco Meal





Anti Poaching Patrol





Starry, starry nights....



Food!





Preparing for the first call in







Game Drives and
Large Mammal
Transects









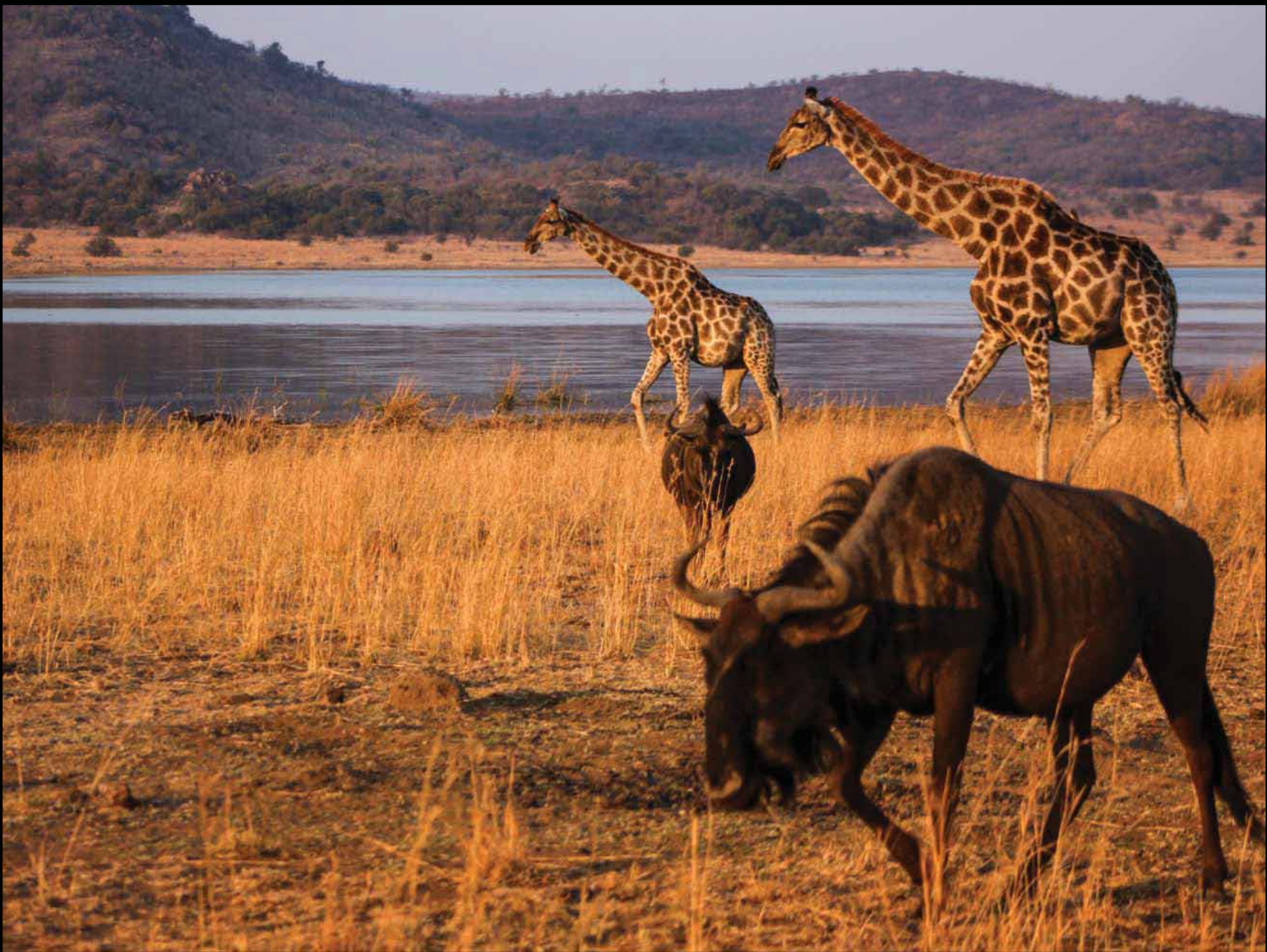










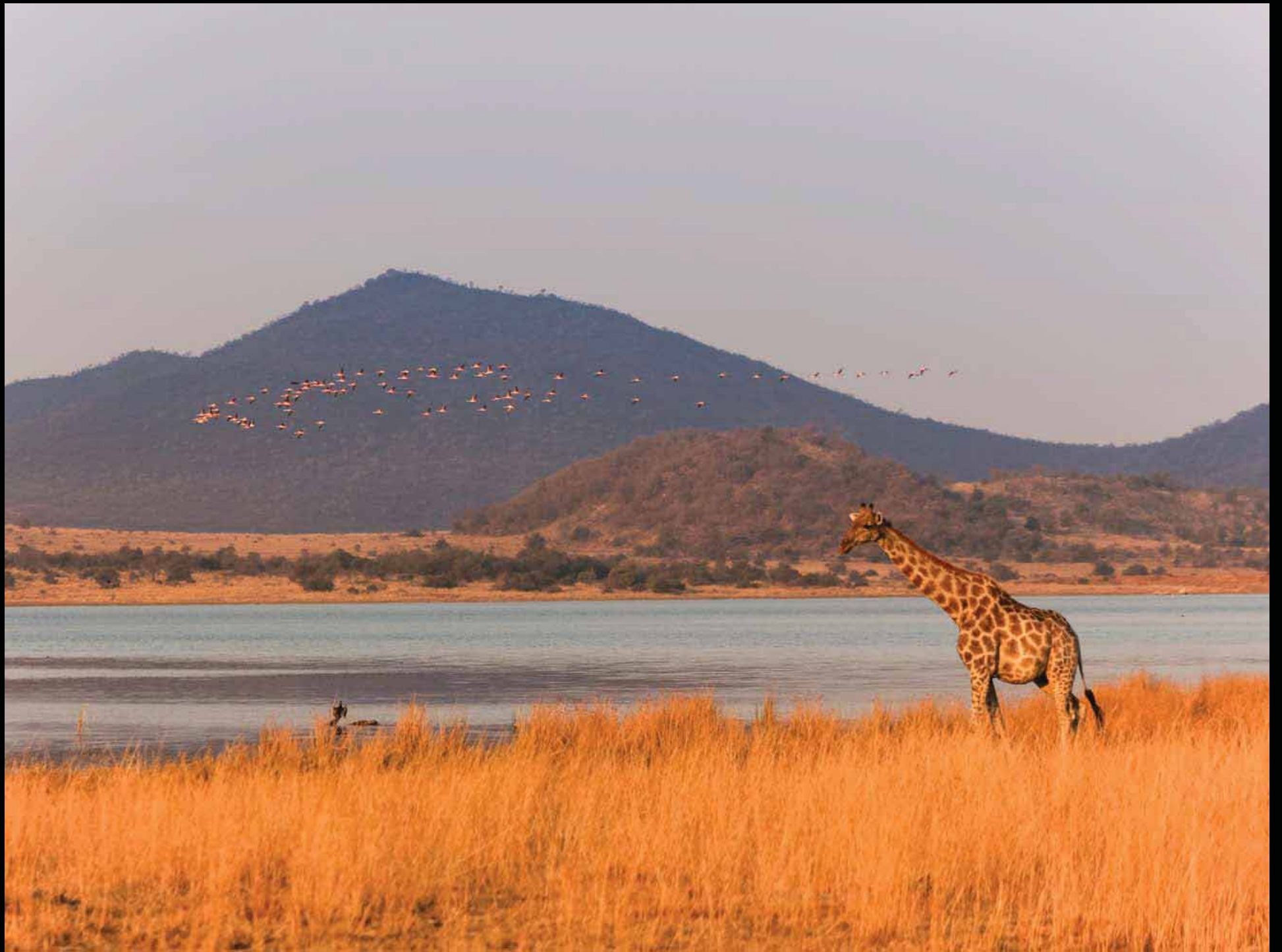


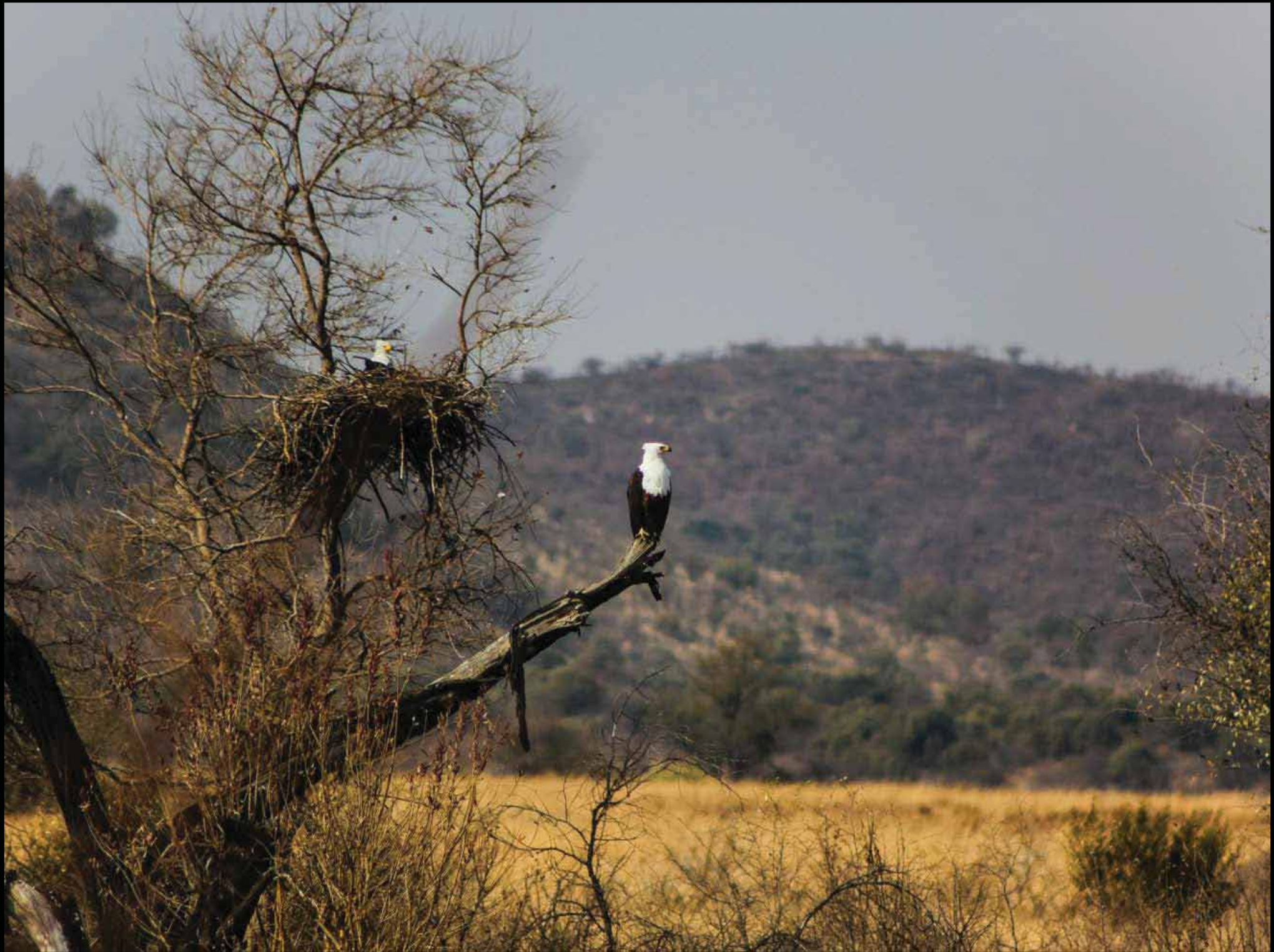
















Latrine Surveys



“GPS coordinates, odometer reading, distance from the road, age, number of pieces.....”

Data Recording





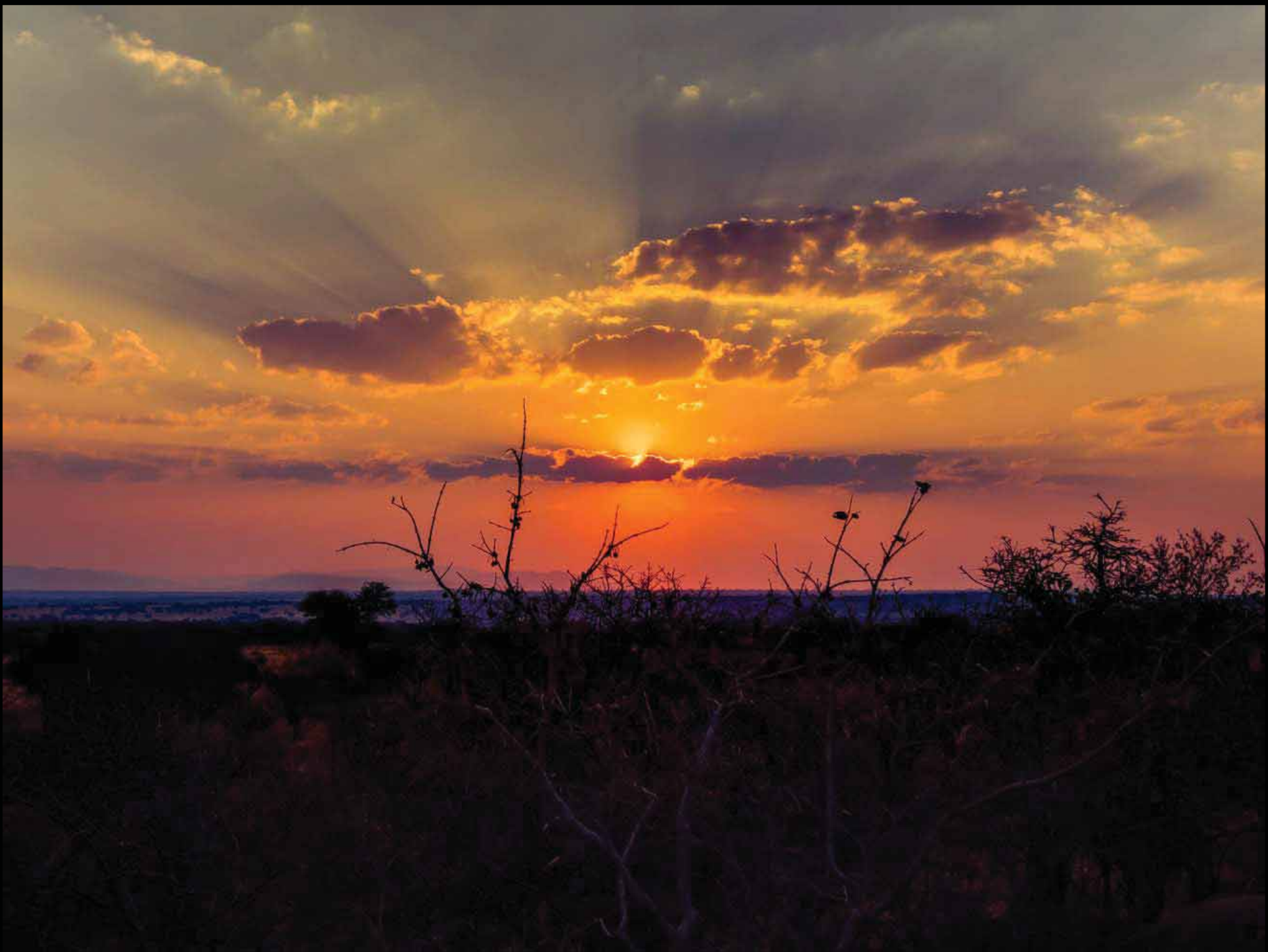
Conservation Day
for a Local School







Day off at a Game Lodge





Much thanks to our many student photographers

**as well as Nail Walkden, Lauren Jones, Charles Theron
and Penny Rees for their valuable contributions**



That's all, folks.